

# Severn Treescapes

## Wild Walks Hereford



Explore and immerse yourself in nature

# Welcome to the Severn Treescapes map for Hereford

This map highlights woodland and other green spaces that are brilliant for trees and other wildlife, within easy reach of Hereford. They can be visited by bus, train, foot, bike and/or car.

**Postcodes** and/or **what3words** are given for each site. Some sites have easy and harder routes available.



**Easy ★:** Well-marked routes with flat, even, often hard surfaces, few steps or steep sections

**Medium ★★:** Some steeper or possibly muddy routes, with rougher surfaces

**Hard ★★★:** Less well defined and maintained routes with some steep unstable sections



Queenswood Arboretum in summer © HW T

herefordshirewt.org

KEY:



By Car



By Bus



By Train



By Foot



By Bike



Kissing Gate



Dogs On Lead



No Dogs



Cafe



Toilets

## Credenhill Park Wood



Boasting stunning summit views, this semi-natural ancient mixed woodland site features one of Britain's largest Iron Age hillforts (over 2,000 years old).

### Access

Free car park, [HR4 7DH](#), [over.repelled.rooks](#)  
The wood's main entrance is at the car park just off the Credenhill-Tillington Road.

The path leads up the slope from the car park and is suitable for pushchairs.

### Highlights

- Special Wildlife Site brimming with a wide range of woodland animals and plants including bluebells and early purple orchids.

2

## The Weir Garden National Trust



Dating back to Roman times, with a discovered bathhouse, the site features a Humphry Repton-designed walled garden and 1920s gardens with a restored glasshouse.

### Access

Car park (parking and entry free for National Trust members), [HR4 7QF](#), [education.operation.jumbo](#)

Paths around the garden are steep in places with steps, uneven surfaces and protruding tree roots.

### Highlights

- Site of Special Scientific Interest.
- Birdlife includes woodpeckers, kingfishers and goosanders.

## Wyevale Wood



30-60-minute circular walk through a secondary oak woodland within an ancient woodland setting, just 200m from Drovers Wood.

### Access

Limited parking at the end of Green Lane, [HR4 7PN](#), [steams.fetching.habit](#)

Mix of natural wide and narrow level paths that can get wet and muddy or flood.

### Highlights

- Broad-leaved helleborine, bluebells, lady's smock and goldilocks buttercup grow beneath the canopy of oak trees.

3

## Drovers Wood



New woodland created in 2001 and featuring ancient, pollarded oaks that were previously part of the farmland landscape.

### Access

Public right of way links to the Wye Valley Walk. Best accessed via Wyedale Wood and use entrance at [ringside.magically.sounds](#)

Mix of natural wide and narrow level paths that can get wet and muddy or flood.

### Highlights

- Variety of trees including oak, ash, birch, crab apple and spindle.

4







Song thrush © Amy Lewis

herefordshirewt.org

5

## Breinton Springs National Trust

A Scheduled Ancient Monument featuring traditional orchards, a freshwater spring and scenic riverside trees. Site of Special Scientific Interest.

**Access**  
Free car park, [HR4 7PG](#), [paradise.pyramid.roughness](#)  
60 minute walk from city centre; part of the Wye Valley Walk to centre of Hereford.

Steep path down to riverside. Grassy and gravel paths; can be muddy.

**Highlights**

- Orchards home to winter thrushes and blackcaps, the rare noble chafer beetle and mistletoe marble moth.

6

## Newton Coppice

This small woodland has a pleasant 1km circular walk. It connects with Belmont and Haywood Country Park which has parking/play facilities/lake and a Story Book Trail with veteran oak trees and viewpoint.

**Access**  
Parking on layby on A465 near Ruckhall Lane, [HR2 9RX](#), [regard.spurtd.reclusive](#)

Cycle bars to secure bikes 10m from entrance.

**Highlights**

- Oak woodland with holly, yew and a bramble layer (often missing in other woodlands if over-browsed by deer).
- Home to a variety of common woodland birds.

7

## Bishop's Meadow

This area, historically owned by the Bishops of Hereford, was gifted to the public in the 19th century. It features a Victorian footbridge to Castle Green and offers views of the cathedral.

**Access**  
Accessible from city centre bus stops, cycle routes and car parks, [HR2 7RB](#), [shade.match.mole](#)

Surfaced and grassy paths.

**Highlights**

- Collection of copper beech trees.
- Common grassland birds such as crows, jackdaws, black-headed gulls and pied wagtails. Kingfishers and ducks on or over water.

8

## Castle Green

Hereford's Castle Green, a historic park by the River Wye, offers gardens, a playground and open space for recreation and events. Former grounds of Hereford Castle.

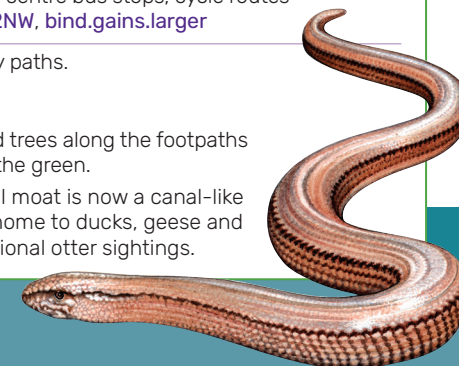
**Access**  
Accessible from city centre bus stops, cycle routes and car parks, [HR1 2NW](#), [bind.gains.larger](#)

Surfaced and grassy paths.

**Highlights**

- Range of parkland trees along the footpaths and perimeter of the green.
- Section of original moat is now a canal-like stretch of water home to ducks, geese and moorhens. Occasional otter sightings.

Illustrations: speckled wood butterfly (top left), slow worm (bottom right) © Abi Stubbs



KEY:



By Car



By Bus



By Train



By Foot



By Bike



Kissing Gate



Dogs On Lead



No Dogs



Cafe



Toilets



9

## Bartonsham Meadows



Bartonsham Meadows, located within a River Wye meander southeast of the city, are popular with walkers and have a network of footpaths that criss-cross and encircle them.

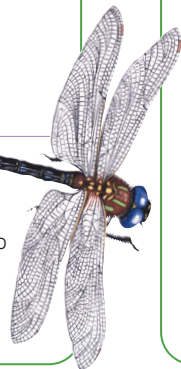
### Access

Accessible from city centre bus stops, cycle routes and car parks, [HR1 2RB](#), [goods.locals.loops](#) Gated.

Grass and soil paths.

### Highlights

- Species-rich floodplain meadows are being restored to support a range of wildflowers and animals including skylarks, barn owls and orange-tip butterflies.



11

## Lugg Meadows



Explore River Lugg's wildflower meadows, a key part of the Lower Lugg Valley. Discover hedgerows, riverside trees and nationally important Lammas meadows, historically opened for communal grazing on August 1st.

### Access

Discrete lane and free parking opposite Cock of Tupsley pub

[HR1 1UT](#), [drew.leans.hotels](#)

### Highlights

- Wildflowers including the rare snake's-head fritillary.
- Animals include otters, kingfishers and nesting curlews.
- Rich in dragonflies, damselflies and butterflies.

13

## Lea & Paget's Wood Nature Reserve



One of the finest ancient semi-natural broadleaved woodlands left in the Wye Valley National Landscape.

### Access

Two parking spaces layby on Hawkers lane, [HR1 4QA](#), [perkily.gripes.depths](#)

No surfaced paths. The low-lying main track remains permanently damp and can be very muddy.

### Highlights

- Diverse ancient woodland plants thrive alongside mature oak and ash trees.
- Variety of rich birdlife including pied flycatchers in spring.

10

## Aylestone Park



Aylestone Park is a popular parkland, playground and nature reserve with wonderful views across its meadows, hedgerows and the Hereford & Gloucester Canal bordering its northern edge.

### Access

Free car park, [HR1 1JJ](#), [legend.recall.gossip](#) Park and cycle facilities (registered users).

Gravel pathways.

### Highlights

- Includes hedgerows, marshland and planted native fruit tree orchard.
- Moorhens and ducks along the canal.

12

## Haugh Woods & Poor's Acre



Overlooking the Herefordshire hills, this ancient semi-natural sessile oak woodland is undergoing coppice restoration.

### Access

Main free car park, [HR1 4QX](#), [screening.stags.order](#)

Wide gravel tracks; hilly sections.  
Two signed butterfly trails.

### Highlights

- Site of Special Scientific Interest.
- One of the best woods in the county for over 600 species of butterfly and moth.

14

## Queenswood Country Park & Arboretum



This remnant of ancient oak woodland, once extending to Wales, offers spring blossoms and vibrant autumn foliage. Historically held by the Crown, it was renamed 'Queenswood' during Elizabeth I's reign.

### Access

Car park (variable charge applies)

[HR6 0PY](#), [promise.pods.fields](#)

### Highlights

- Site of Special Scientific Interest; Purple hairstreak and silver-washed fritillary butterflies. Tree collection boasts over 1,200 rare and exotic trees.



KEY:



By Car



By Bus



By Train



By Foot



By Bike



Kissing Gate



Dogs On Lead



No Dogs



Cafe



Toilets

[herefordshirewt.org](http://herefordshirewt.org)





Severn Treescapes is a Gloucestershire, Herefordshire and Worcestershire Wildlife Trusts' partnership project working across the three counties.

Together we have partnered up to provide a team of on the ground advisors, as well as a series of informative events, best practice visits, community engagement opportunities, grants advice and applications assistance.

Find out more about the project on Worcestershire Wildlife Trust website: [herefordshirewt.org/severn-treescapes](http://herefordshirewt.org/severn-treescapes)

This resource has been written by Ed Drewitt, Freelance Naturalist and Learning Consultant, and Louisa Aldridge, Learning Consultant.

Map and graphic design by Clare Challice, Inkwood Design.  
Watercolour illustrations by Abi Stubbs.

© Photography Credits:

Queens Wood Arboretum (summer) by HWT; Weir Garden (grey heron) by Shutterstock; Credenhill Park Wood (woodland view), Wyevale Wood (tree canopy), Drovers Wood (spindle), Newton Coppice (woodland scene), Lugg Meadows (wetland scene) by Ed Drewitt; Castle Green (tree canopy) by Paul Lane; Breinton Springs (nobel chafer beetle) by Harry Green; Ayleston Park (beech branch), Bishops Meadow (goldfinch), Bartonsham Meadows (orange-tip butterfly) & Haugh Woods (tree canopy) by Shutterstock; Lea & Pagets Wood (bluebells) by Laura Mort; song thrush by Amy Lewis.

Photo opposite: Queens Wood Arboretum, Hereford (autumn) by Caitlin Chilman.



# Severn Treescapes

*Wye to Wyre, connecting nature and people*

[herefordshirewt.org](http://herefordshirewt.org)